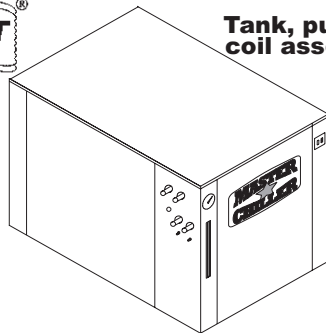




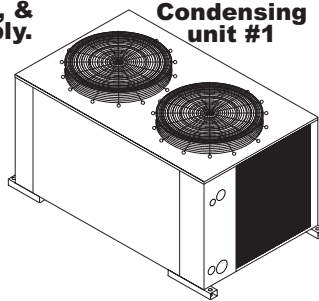
Product Sheet



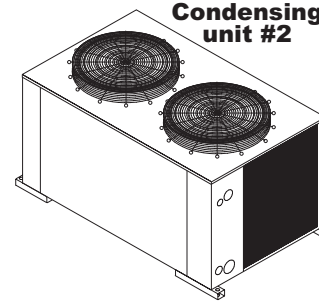
30 thru 60 Ton
2 & 3 Stage
Remote Chillers



Tank, pump, & coil assembly.

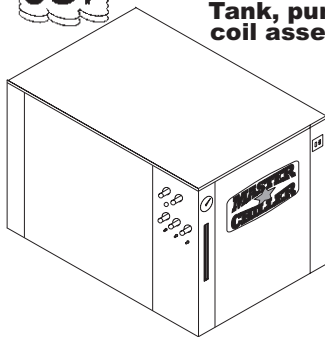


Condensing unit #1

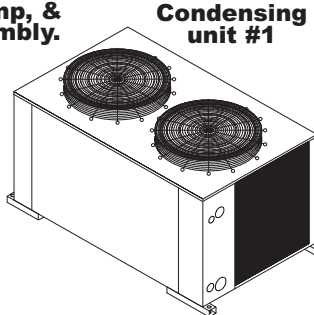


Condensing unit #2

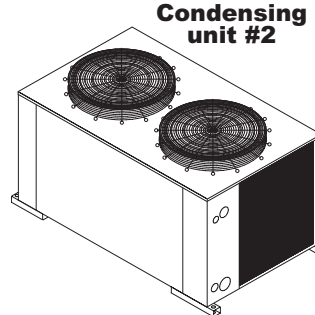
30 Ton & 40 Ton Remote 2 Stage Chillers



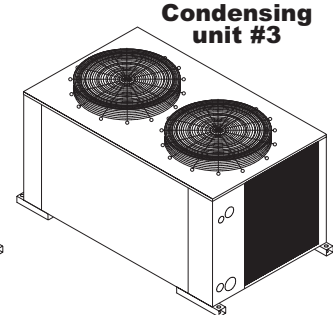
Tank, pump, & coil assembly.



Condensing unit #1



Condensing unit #2



Condensing unit #3

45 Ton & 60 Ton Remote 3 Stage Chillers

STANDARD FEATURES

- Powder Coated, welded angle iron frame.
- Powder coated **Paint Grip**® steel panels.
- On/Off switch and temp. indicator.
- High Efficiency industrial condenser.
- High efficiency **American made** compressor.
- Industrial accumulator.
- Industrial receiver.
- Industrial **manual** reset high pressure safety.
- Industrial **Auto.** reset low pressure safety.
- Industrial pump down system.
- Moisture indicating liquid line sight glass.
- R-22, HCFC* system; Requires field charging.
- **Large** covered & insulated **Polyethylene Tank.**
- Tank liquid level indicator/with makeup float valve.
- Efficient **Spirallex Cluster Coil**® evaporator.
- High pressure/volume **GOULDS**® pump.
- Internal liquid system bypass.
- Temperature controlled in tank/**Stores cold liquid.**
- Can chill water or non-flammable/non-corrosive liquids.
- * Approved for use until year 2020.
- Fan cycling for low ambients down to +10°F.
- Tank, pump, & ref. coil inside, condensing units outside. **Water inside/heat outside.**
- Suitable for inside or outside installation.
- **Energy Saving 2 & 3 stage operation.**
- No electrical connection between inside and outside unit.

WARRANTY

- Compressor 5 years.
- All other parts 1 year.
- Labor 1 year.

OPTIONS

- **Head Pressure** low ambient control to -40°F.
- Digital controls/Remote digital controls.
- Stage sequencing reversing switch
- Larger pumps / Glycol fill port.
- Stainless steel tank & pump cabinet.
- Pump pressure gauge.

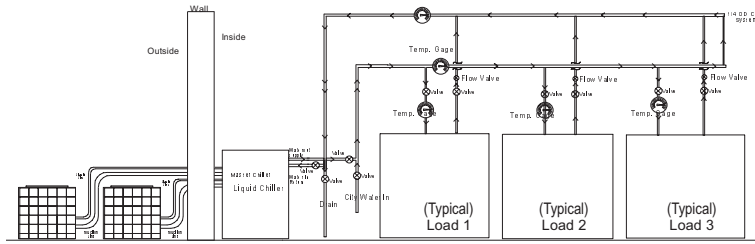
MASTER CHILLER INC. 3730 Dividend Dr. Garland, TX. 75042
1-800-666-5822 **972-272-0886** **FAX 972-494-9047**



Product Information



30 thru 60 Ton
2 & 3 Stage
Remote Chillers



Inside installation of the pump, tank, and refrigeration coil.

Outside installation of the condensing unit.

Allows you to have the best of both worlds, the water inside and the heat outside.

No Freezing Problems

Specifications

Model #	Nom. Tons	Chiller Electrical	Appr. Amps	Min. Fuse	Ref. Line Size		Unit Dim.			Tank Size	Water		Pump Size	Approx. Ship WT.
					Liq.	Suc.	L	W	H		IN	OUT		
MCR3023	30	208-230/60/3	167.0	206.4							2" 1 1/2"			1860
Cond. Unit 1	15	208-230/60/3	71.6	88.5	5/8	1 3/8	77"x44"x40"				N/A			790
Cond. Unit 2	15	208-230/60/3	71.6	88.5	5/8	1 3/8	77"x44"x40"				N/A			790
Chiller Mod.	30	208-230/60/3	23.8	30	5/8 (x2)	1 3/8	72"x48"x45"	400 Gal			2" 1 1/2"	3 Hp.		280
MCR3024	30	460/60/3	77.8	96.2							2" 1 1/2"			1860
Cond. Unit 1	15	460/60/3	33.5	41.4	5/8	1 3/8	77"x44"x40"				N/A			790
Cond. Unit 2	15	460/60/3	33.5	41.4	5/8	1 3/8	77"x44"x40"				N/A			790
Chiller Mod.	30	460/60/3	10.8	13.4	5/8 (x2)	1 3/8	72"x48"x45"	400 Gal			2" 1 1/2"	3 Hp.		280
MCR4023	40	208-230/60/3	175.6	217.1							2" 1 1/2"			2100
Cond. Unit 1	20	208-230/60/3	75.9	93.8	5/8	1 5/8	77"x44"x40"				N/A			900
Cond. Unit 2	20	208-230/60/3	75.9	93.8	5/8	1 5/8	77"x44"x40"				N/A			900
Chiller Mod.	40	208-230/60/3	23.8	93.8	5/8 (x2)	1 5/8	72"x48"x45"	400 Gal			2" 1 1/2"	3 Hp.		300
MCR4024	40	460/60/3	88.6	109.5							2" 1 1/2"			2100
Cond. Unit 1	20	460/60/3	38.9	48.1	5/8	1 5/8	77"x44"x40"				N/A			900
Cond. Unit 2	20	460/60/3	38.9	48.1	5/8	1 5/8	77"x44"x40"				N/A			900
Chiller Mod.	40	460/60/3	10.8	13.4	5/8 (x2)	1 5/8	72"x48"x45"	400 Gal			1 1/4" 1"	3 Hp.		300
MCR4533	45	208-230/60/3	250.5	309.7							2" 1 1/2"			2670
Cond. Unit 1	15	208-230/60/3	71.6	88.5	5/8	1 3/8	77"x44"x40"				N/A			790
Cond. Unit 2	15	208-230/60/3	71.6	88.5	5/8	1 3/8	77"x44"x40"				N/A			790
Cond. Unit 3	15	208-230/60/3	71.6	88.5	5/8	1 3/8	77"x44"x40"				N/A			790
Chiller Mod.	45	208-230/60/3	35.7	44.1	5/8 (x3)	1 3/8	72"x48"x45"	400 Gal			2" 1 1/2"	5 Hp.		300
MCR4534	45	460/60/3	116.8	144.4							2" 1 1/2"			2680
Cond. Unit 1	15	460/60/3	33.5	41.4	5/8	1 3/8	77"x44"x40"				N/A			790
Cond. Unit 2	15	460/60/3	33.5	41.4	5/8	1 3/8	77"x44"x40"				N/A			790
Cond. Unit 3	15	460/60/3	33.5	41.4	5/8	1 3/8	77"x44"x40"				N/A			790
Chiller Mod.	45	460/60/3	16.3	20.2	5/8 (x3)	1 3/8	72"x48"x45"	400 Gal			2" 1 1/2"	5 Hp.		310
MCR6033	60	208-230/60/3	263.4	325.6							2" 1 1/2"			3040
Cond. Unit 1	20	208-230/60/3	75.9	93.9	5/8	1 5/8	77"x44"x40"				N/A			900
Cond. Unit 2	20	208-230/60/3	75.9	93.9	5/8	1 5/8	77"x44"x40"				N/A			900
Cond. Unit 3	20	208-230/60/3	75.9	93.9	5/8	1 5/8	77"x44"x40"				N/A			900
Chiller Mod.	60	208-230/60/3	35.7	44.1	5/8 (x3)	1 5/8	72"x48"x45"	400 Gal			2" 1 1/2"	5 Hp.		340
MCR6034	60	460/60/3	133.0	164.4							2" 1 1/2"			3040
Cond. Unit 1	20	460/60/3	38.9	48.1	5/8	1 5/8	77"x44"x40"				N/A			900
Cond. Unit 2	20	460/60/3	38.9	48.1	5/8	1 5/8	77"x44"x40"				N/A			900
Cond. Unit 3	20	460/60/3	38.9	48.1	5/8	1 5/8	77"x44"x40"				N/A			900
Chiller Mod.	60	460/60/3	16.3	20.2	5/8 (x3)	1 5/8	72"x48"x45"	400 Gal			2" 1 1/2"	5 Hp.		340

Specifications may change without notice.

50cy available in sizes call **Factory** or **Sales Representative**.

MASTER CHILLER INC. 3730 Dividend Dr. Garland, TX. 75042
1-800-666-5822 **972-272-0886** **FAX 972-494-9047**